

CS3



Load & Tension Measurement

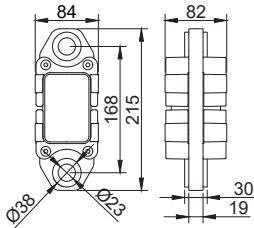


Key Features

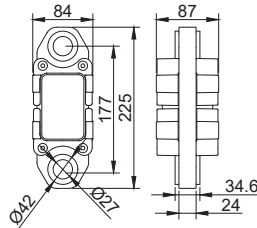
- Replaceable Battery
- Up to 225 Days Operation
- IP68 Waterproof & Dustproof
- Lightweight & Compact Design
- 400% Overload Protection

Applications

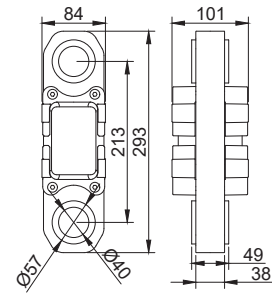
- Crane Lifting Load Measurement
- Cable and Wire Tension Monitoring
- Stage Rigging Safety Monitoring
- Marine Weighing System



CS3-1 / CS3-3



CS3-5



CS3-10

Specifications

Model	CS3-1	CS3-3	CS3-5	CS3-10
Max Capacity (kg)	1000	3000	5000	10000
Readability (kg)	0.5	1	2	5
Safe Overload	400%			
Case Material	Aluminum load cell, Polycarbonate housing and protective guard			
Wireless	ZigBee (IEEE 802.15.4)			
Wireless Range	Typical Range: 30 m (max. 300 m)			
Protection Rating	IP68			
Battery	Replaceable Li-ion battery, Charger included			
Operating Time	Approx. 225 days (8 h/day, max. 1800 h)			
Charger Input	5 VDC, 1.5 A SMPS			
Temperature / Humidity	-20 to 60 °C / 85% RH (Non-condensing)			
Weight	2 kg	2 kg	2.6 kg	5.5 Kg

Options

OP-33 Shackle

OP-34 Swivel hook with bearing

OP-39 Stainless steel load cell